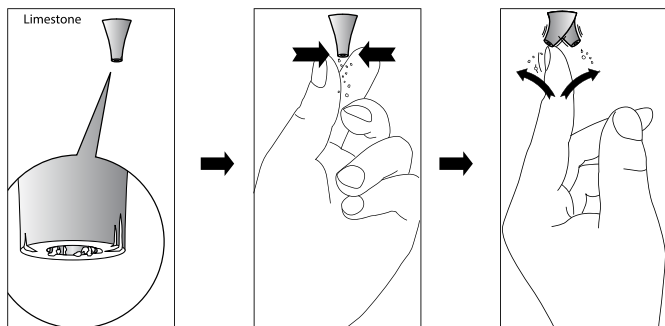


- (A) Shower arm / Wall outlet
- (B) Mesh filter
- (C) Locking snodo
- (D) Showerhead
- (E) Lower seal
- (F) Grub screw
- (G) Allen key (size 1.5, 2.5 dependant on model)

R50005BAK

The chrome plate we use on our taps is very durable, nevertheless care should be taken when cleaning them. They should be cleaned only with warm soapy water followed by rinsing with clean water and drying with a soft cloth. All finishes are vulnerable to acid attack and some strong substances such as household cleaners, disinfectants, denture cleaners, hair dyes, wine making and photographic chemicals can cause the surface to go black or peel.

Cleaning Tips



In case of extensive limestone accumulation in nozzles, shower-head will have to be disassembled for cleaning. In these cases, please request specific instructions by distributor, prior to proceeding.



Remember to turn off the mains water supply before connecting to any existing pipe work. Flush the piping with plenty of water prior to installation.

Installation Instructions:

1. Loosely assemble the product as per the exploded drawing, note some parts may be supplied pre assembled. Do not disassemble any assemblies unless required to complete installation.
2. Attach any plumbing inlet connections as shown.
3. Attach any mounting fixings as indicated; secure the product firmly to the mounting surface.
4. Where the product includes a shower outlet refer to the separate instructions supplied.



EURORAMA'S products are designed, manufactured and tested to the highest International Standard. Rubinetterie EURORAMA Company guarantees its own products against incidental defects coming from manufacturing or workmanships.

The Guarantee is valid for all the Products listed in the Catalogues as per the below conditions:

- 5 Years on the Cartridge
- 5 Years on the Ceramic head valves
- 2 Years for parts involve Mechanical Movements
- 5 Years on Chromium Plate Finishing, provided that they are treated in a correct way
- 2 Years for the other finishing (coloured, gold, bronze and so on...)

Should a complaint arise, the product must be given to our Merchant where it was bought along with a copy of proof of purchasing. The Faulty Material should be dispatched only through our Merchant, free our warehouse, to our Building Unit N°3 (Via al sesia, 4 Fr. Roccapetra 13019 VARALLO (VC) ITALY). Should the defect be found by our Technical Department according to the Company Quality System UNI EN ISO 9001, it will be replaced free of charge.

The Guarantee is not valid in case of:

1. use of chemical, acid, limestone, not drinking water or in case of pipelines below zero and not filter Water.
2. use on the surfaces of wire wool or scratchy cloth abrasive detergents, corrosive substances containing alcohol or acid.
3. damages or defects arising from incorrect installation, improper use, lack of maintenance, including build-up of lime scale; damages if the products is installed, taken apart, modified or misused by no competent persons.
4. non-fulfilment, or misused of the instruction listed in the installation and maintenance guide
5. damages caused by transport or negligent warehousing

**NOTICE**

Many household cleaners contain abrasives and chemical substances and they can seriously damage our products.

So we suggest to clean them with a mild washing up detergent or soap solution and then wiped dry using a soft cloth.

The present Guarantee does not undermine the rights as provided in the IT Law "d.lgs 02/02/02 n. 24" accomplishment EEC Directive "1999/44/CE".

RUBINETTERIE EURORAMA'S LIABILITY WILL NOT EXCEED THE CONTRACT PRICE FOR THE PRODUCT CLAIMED TO BE DEFECTIVE OR UNSUITABLE. THIS WARRANTY IS LIMITED SOLELY TO THE ABOVE AND THIS WARRANTY AND ANY WARRANTIES IMPLIED BY STATE LAW WILL APPLY ONLY FOR THE APPLICABLE WARRANTY PERIOD SPECIFIED HEREIN.

**PLEASE ALWAYS KEEP THE PROOF OF PURCHASING, IN ORDER TO OBTAIN THE RIGHT TO GUARANTEE SERVICE.**



**WARNING**  
 -Installation Performed By Qualified Personnel Only!  
 -Clean Carefully the water Pipes Before Installing The Tap.



turn the boiler off and non return valves are not required.  
 combination boilers are fitted it is only necessary to shut off the incoming mains and  
 hot and cold pipes as close as possible to the tap, These are not supplied. Where  
 supplied from a tank and cold from the mains, non return valves are fitted on both  
 These taps are double flow. Water bylaw require that where the hot water is

**Preparation and bylaw requirements**  
 applicable.  
 Bylaws Scheme and comply with requirements of British Standard 5412:1996 where  
 All product are manufactured using materials tested and approved under the Water

**Approvals**  
 claimable under the warranty.  
 installation process, incorrect maintenance or misuse and as a result not be  
 Defects notified after fitting may be regarded as damage resulting from the  
 - on receipt of this product the chrome finish must be checked for blemishes.  
 product may not correctly work or not work at all.  
 -if the above mentioned conditions (see points 1,2,3,4) are not observed, the

**Standard specifications**  
 1. Recommended working pressure:.....1 Bar  
 2. Maximum test pressure:.....5 Bar  
 3. Maximum hot water temperature:.....80° C  
 4. We recommend installing filters to this product.  
 5. Warning:  
 - if the above mentioned conditions (see points 1,2,3,4) are not observed, the  
 product may not correctly work or not work at all.  
 - on receipt of this product the chrome finish must be checked for blemishes.  
 Defects notified after fitting may be regarded as damage resulting from the  
 installation process, incorrect maintenance or misuse and as a result not be  
 claimable under the warranty.

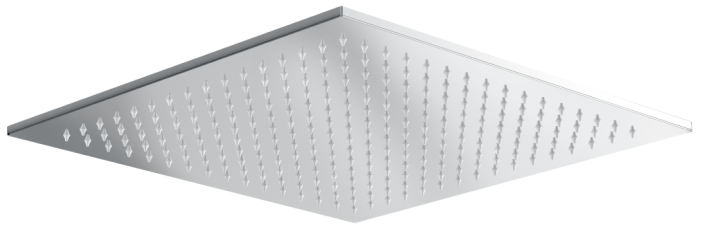
**General Installation Requirements**  
 The installation must comply with regulations of the Local Water Authority as  
 contained in their bylaws. All of the taps in this range are double flow (the hot and  
 cold water are separated) and should therefore be supplied with hot and cold water  
 at balanced pressures, both from the tank or both from the mains (via a  
 combination boiler for example). If the taps are not supplied at balanced pressures  
 then the tap will not function correctly, It will also be necessary to fit non-return  
 valves on both hot and cold feeds. It is very important that all pipe work is flushed  
 thoroughly after installation to avoid damaging the ceramic disc.

reference.  
 Please read these instructions carefully and keep in a safe place for future

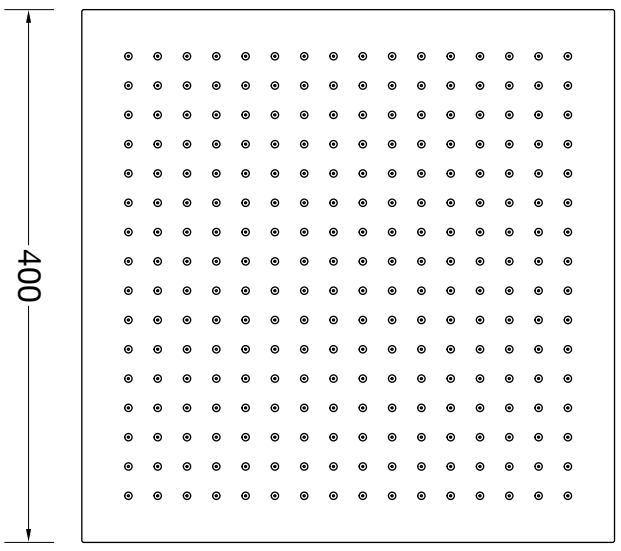
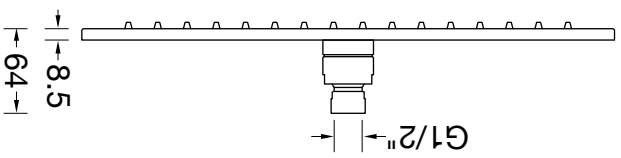
**INTRODUCTION**

**SHOWERHEAD**

R50005BAK



**INSTALLATION INSTRUCTIONS**



**DIMENSIONS**

R50005BAK