

This product should only be fitted by a qualified plumber. Should the installation be completed by a non-qualified person then the guarantee may be considered invalid.

WARRANTY

EURORAMA - ARTDESIGN products are designed, manufactured and tested to the highest Standard. EURORAMA Company guarantees its own Products against Incidental Defects coming from Manufacturing or Workmanship. The Guarantee is valid for all the Products listed in the Catalogues as per the below conditions:

5 Years on the Cartridge.

5 Years on the Ceramic Valves

2 Years for Parts involve Mechanical Movements

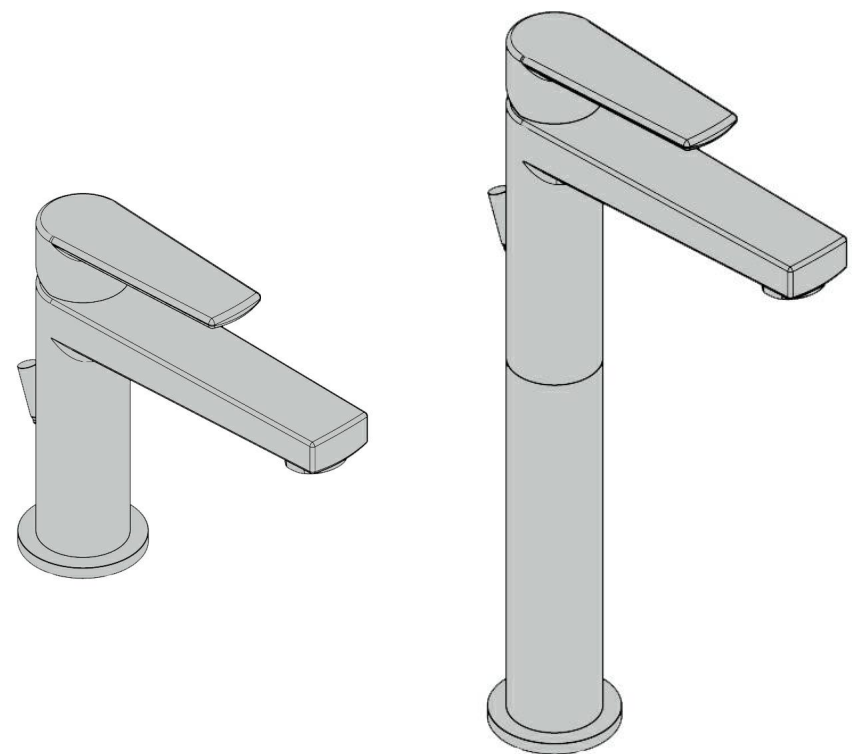
5 Years on Chromium Plated Finishing, provided that They are treated in a correct way as per our Maintenance Guide

2 Years for the other Finishing (Coloured, Gold, Bronze and so on...)

Should a complaint arise, the product must be given to our Merchant where it was bought along with a copy of proof of purchasing. The Faulty Material should be dispatched only through our Merchant, free our warehouse, to our Building Unit N° 3 (Roccapietra, Via al Sesia 4

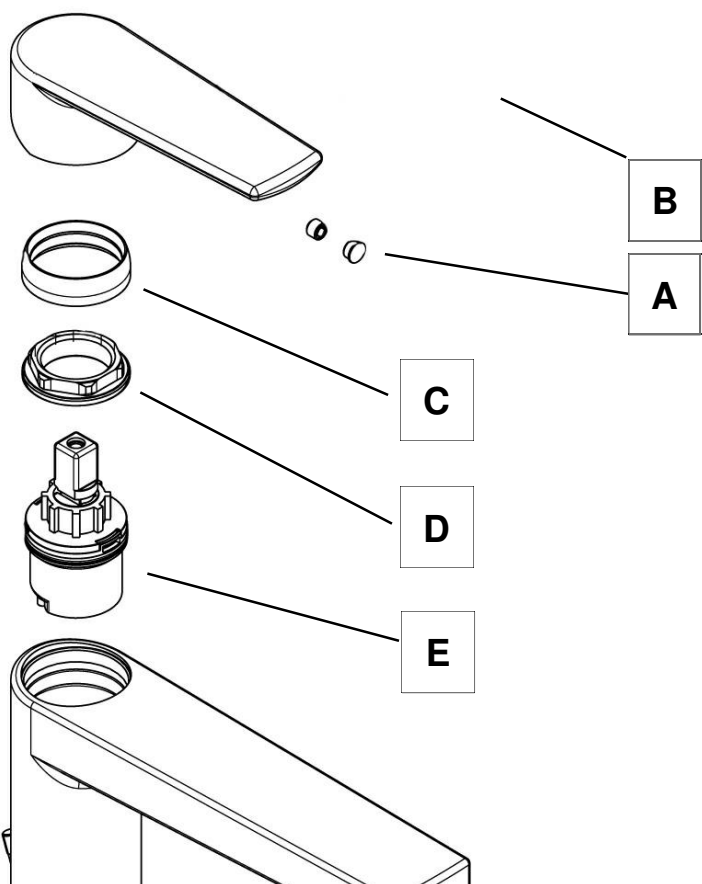
4

INSTRUCTIONS



WASHBASIN/BIDET MIXER

TALL WASHBASIN MIXER



CLEANING - REPLACE CARTRIDGE

In the event of any problems, servicing is straight forward.

First shut off the water supply to the tap. Pull out the cap (A) from the handle and with an allen key 2mm (B) loosen the grub screw in handle, but do not remove it. Take off the handle, unscrew the cartridge cover (C) and carefully using a correct size spanner unscrew the retaining nut (D) and remove the cartridge (E). Wash the cartridge with clean running water and make sure that any trapped debris have been removed. Dry and lightly grease the seals (only use silicone grease) and replace the cartridge, retaining nut, cartridge cover followed by the handle.

ATTENTION: the retaining nut (D), must be screw with a torque of 10/11Nm, in case of incorrect tighten, the mixer can be damaged.

CLEANING

The chrome plate we use on our taps is very durable, nevertheless care should be taken when cleaning them. They should be cleaned only with warm soapy water followed by rinsing with clean water and drying with a soft cloth. All finishes are vulnerable to acid attack and some strong substances such as household cleaners, disinfectants, denture cleaners, hair dyes, wine making and photographic chemicals can cause the surface to go black or peel.

For perfect clean of chromed surface of our taps, we suggest