

INSTRUCTION OF INF.WALL MOUNTD URINAL FLUSH UNIT BAT.OP

1. The solenoid valve is mounted on the inner body.

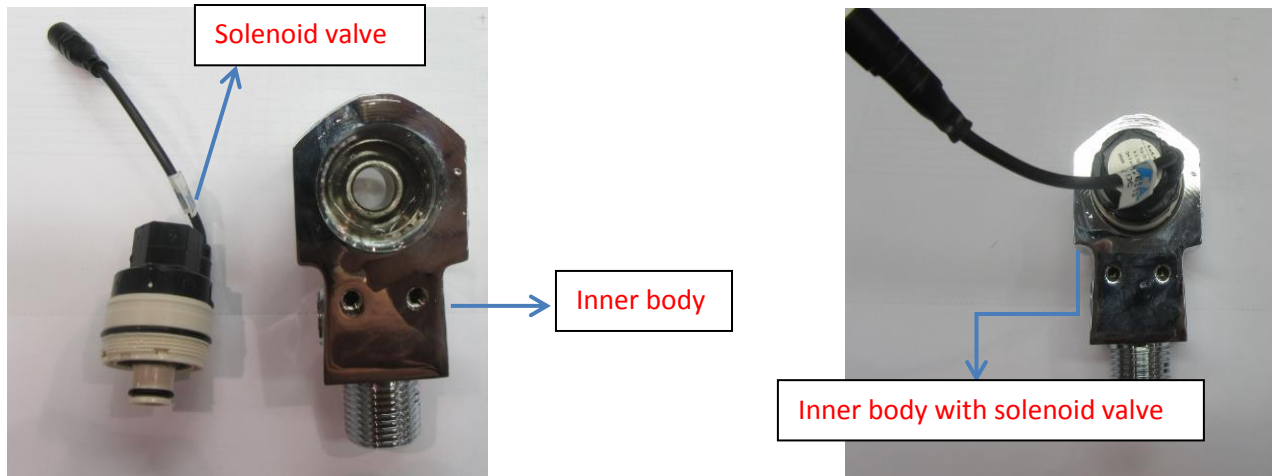


Figure:1

2. Solenoid valve, electronic unit and battery box are connected to each other.
3. Firstly, the battery is placed in the main body after that electronic unit is sitting in the hole.
4. Finally, the inner body is placed in the main body.

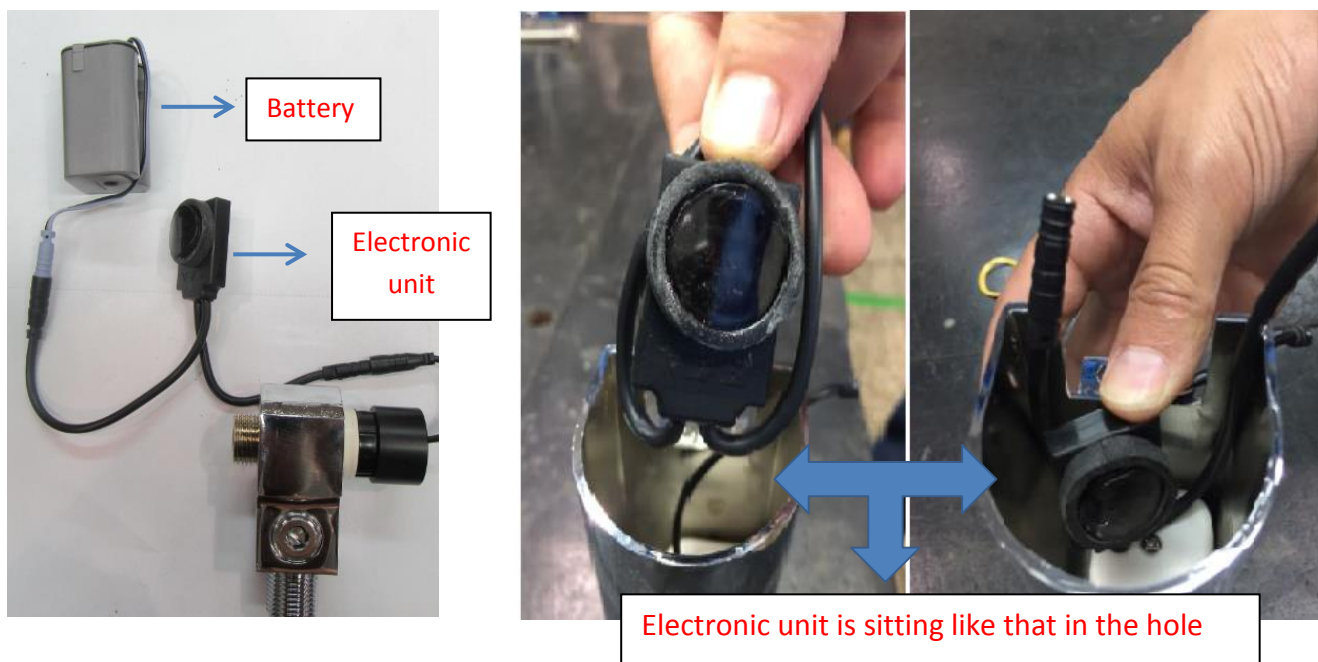


Figure:2.1

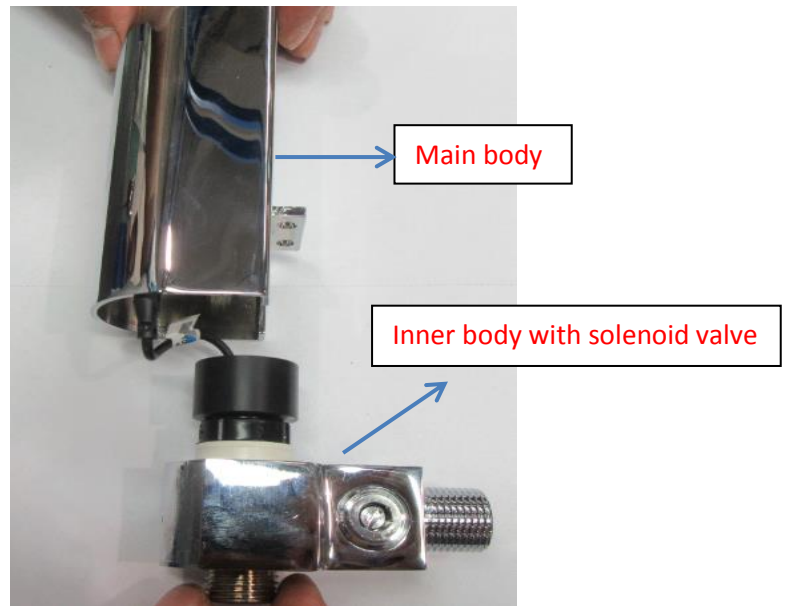


Figure:2.2

5. As shown figure 3 screw is tightened by star screw driver
6. As shown figure 4 screw is tightened by Allen key.

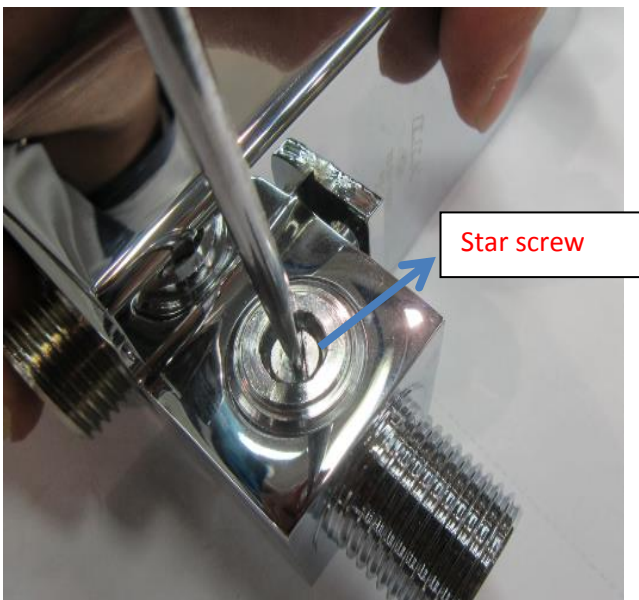


Figure:3

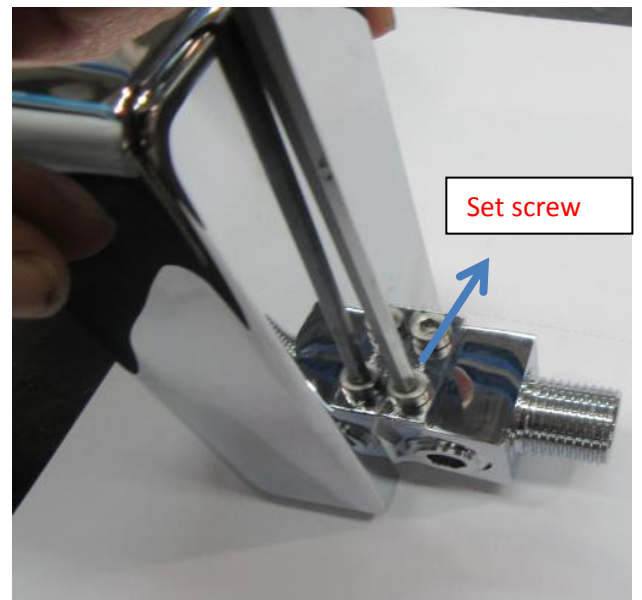


Figure:4

7. The product is ready to use.



Figure:5

TROUBLE-SHOOTING GUIDE

PROBLEM	POSSIBLE CAUSE	SOLUTION	FIGURE NUMBER
Water does not run.	Water supply is not on	Check the water supply. Turn on water supply if necessary.	-
	Battery plug is not connected properly.	Check connection. Reconnect battery if necessary.	6
	Battery is low	If the red indicator is flashing, Remove batteries. Replace with new alkaline batteries.	-
	Filter is clogged.	Remove, clean and reinstall filter. Replace the filter if necessary.	7
	The surface of electronic unit is dirty.	Clean the surface of electronic units.	8
	Electronic unit is not work.	If red light does not work or infrared sensor is not giving any reaction with new batteries, replace electronic units.	-
	Solenoid valve is not work.	If the solenoid valve is not clicking. Replace the solenoid.	-
Water does not stop.	The surface of electronic unit is dirty.	Clean the surface of electronic units.	8
	It may be object within detection distance.	Make sure that object must not be.	-
	It may be in opposite of mirror or another auto-sensor product.	Make sure that the mirror and product must not be.	-
	Make sure that direct light source should not be on the electronic units.	Make sure that the light source must not be on the electronic units.	-
Faucet is leaking water.	Solenoid valve is clogged.	Open solenoid valve and check for clogging. Clean solenoid valve filter and water pathway.	9
	Connection between valve body and solenoid valve is loose.	Check O-ring. Replace O-ring if damaged. Carefully reinstall solenoid valve and do not overtighten.	-
Detection distance is too short or far.	Electronic unit setting may be fault.	Adjust the electronic unit detection distance. Plug out power supply, wait 10 seconds and plug in again. Than follow the arrange instructions for the sensor.	DETECTION RANGE SETTINGS
Self-opening	Electronic unit may be looking at an object or bright light.	Remove object or bright light in front of the sensor. Or follow the arrange instructions.	DETECTION RANGE SETTINGS

DETECTION RANGE SETTINGS FOR URINAL FLUSH UNIT

In order to be active, it is necessary to stop for at least 8 seconds within the detection range. Detection distance is 65 cm. With the remote control you can adjust between 20 cm and 65 cm. Water flow time is 5 seconds. With the remote control you can adjust between 0.5 sec and 16 sec.

Press the corresponding button on the remote control to set the distance. When the distance control button on the remote control is pressed, the sensing distance goes to 20 cm. The electronic unit burns 5 single, 5 double, 5 triple red lights and eventually comes to about 65 cm again with long red light. The distance is about 3 cm each time you press the button on the remote control.

Press the corresponding button on the remote control for the time setting. When the remote control's time setting button is pressed, the single red light on the electronic unit lights up. Each single red light causes a 0.5 second increase in time. When the red light finally lights up long, the operating time returns to 0.5 s.

FIGURES

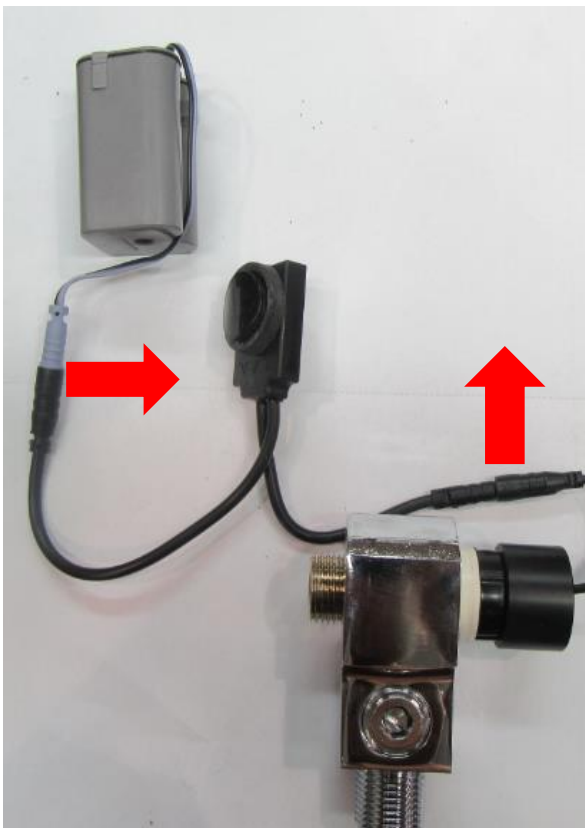


Figure:6

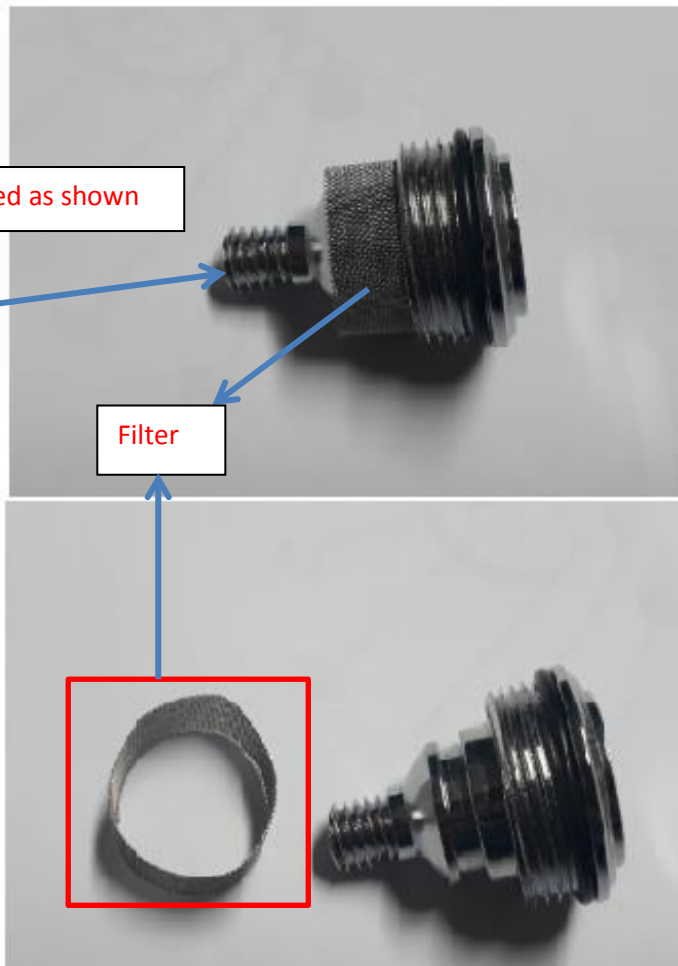
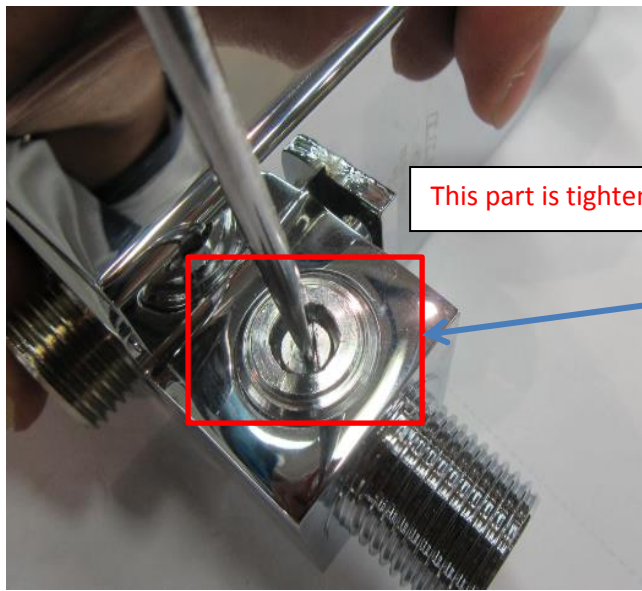


Figure:7



Figure:8



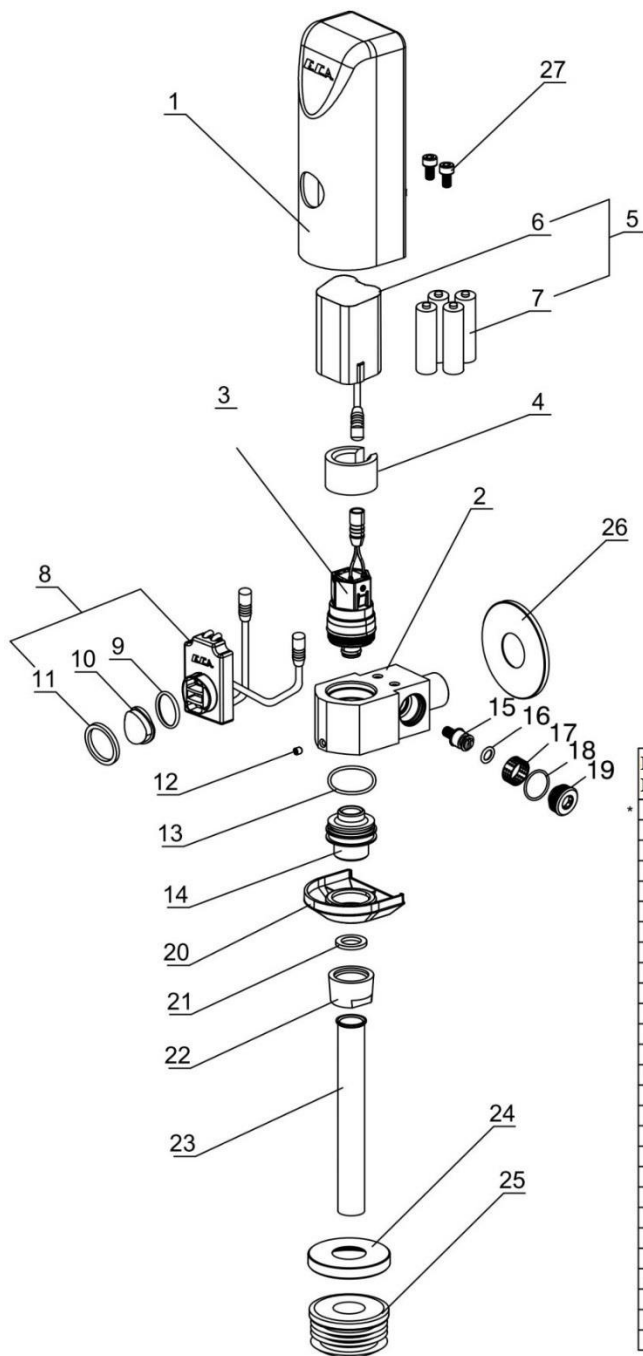
Figure:9

PART LIST



INFRARED SERIES

108111001 INF.WALL MOUNTD URINAL FLUSH UNIT BAT.OP



Item No.	PART NO.	Description
1	110777176	BODY
2	110777177	INLET BODY
3	102126313	SOLENOID VALVE- 6V
4	110824604	FITTING PART
5	102126804	BATTERY BOX GROUP
6	102126083	BATTERY BOX
7	119821016	BATTERY
8	102126949	INFRARED SENSOR GROUP-BATTERY
9	110810370	ORING
10	110824572	GLASS-RADIUS
11	410803021	GASKET
12	110722187	SCREW-M4
13	110803468	O-RING
14	110714192	NIPPLE
15	110722195	OPEN-CLOSE SCREW
16	110810046	O-RING
17	113220003	FILTER
18	110810380	O-RING
19	110722194	SCREW COVER
20	110715367P	ROSETTE
21	110803112	GASKET
22	110718328	NUT
23	110702139	OUTPUT PIPE
24	110715226	ROSETTE
25	110803749	ADAPTER GASKET
26	110715202	ROSETTE
27	112222105	SCREW

*SIGNED PARTS ARE NOT SOLD AS SPARE PART

20.10.2017

